

Supplementary Material

Fig. S1 - Identification of cambial, phloem and xylem cells. A – beginning of the growing season: structure of cambial cells, phloem cells and xylem cells of the previous increment. B, C – distinguishing cells at the stage of cell enlargement from cells at the secondary thickening stage using the polarizing filter. CC – cambial cells, PC – cell enlargement stage, SW – secondary thickening stage, EP – early phloem sieve cells, LW – latewood tracheids. The displayed scale: A – 50 μm ; B, C – 100 μm .

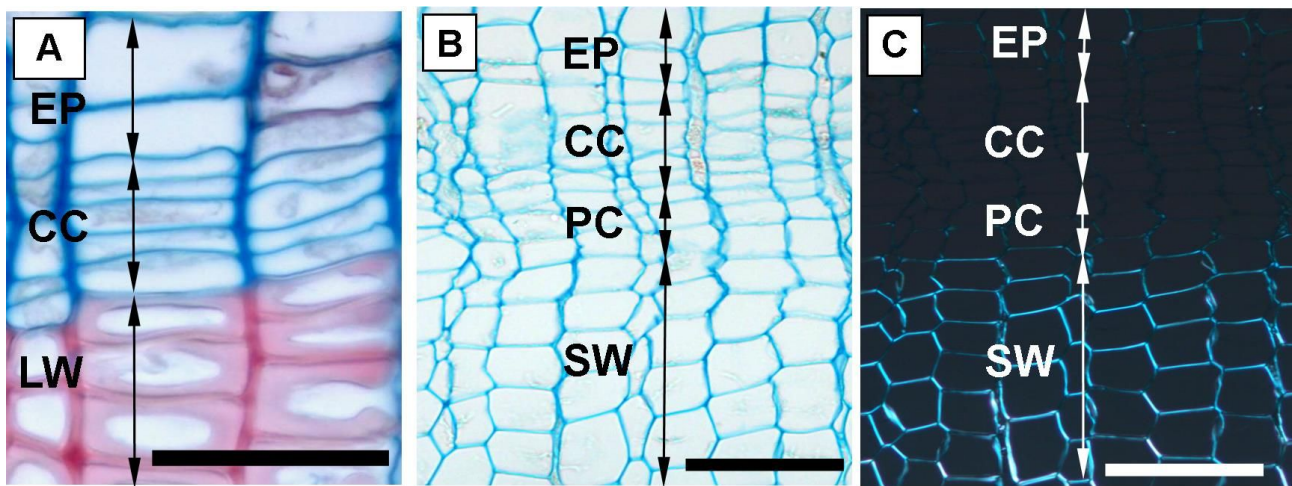


Fig. S2 - Measurement diagram of morphometric parameters of cells. EW: earlywood cell zone, LW: latewood cell zone, CW: cell wall, 2CW: double cell wall dimensions, L: radial dimension of the cell lumen, R: total cell radial dimension.

